

FLOW MONITORING



Most Popular ★

Standard Audit

Gas consumption audit
Basic report

Book an Audit

Professional Audit

Gas consumption audit
extended report

Online monitoring

Book an Audit

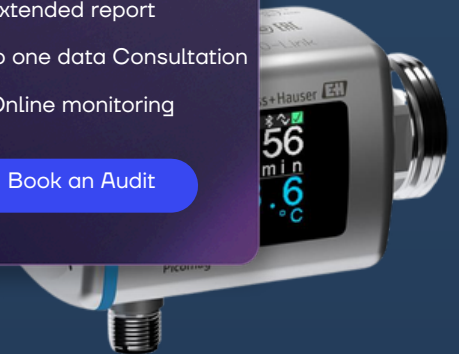
Premium Audit

Gas consumption audit
extended report

One to one data Consultation

Online monitoring

Book an Audit

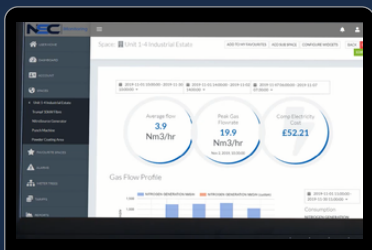


Features

Air, Nitrogen, Oxygen, CO2, Argon

- ▶ Remote monitoring Dashboard
- ▶ Internal power supply unit
- ▶ Internal data acquisition device with local data storage
- ▶ Quick installation in line with existing nitrogen lines
- ▶ Portable

NSC's iMonitoring high pressure consumption scanner is your reliable and efficient plug-and-play flow pattern monitoring solution. With a light weight portable frame, low power consumption and remote access dashboard, you can easily install and accurately size gas generator system for any application. Simply connect iMonitoring inline to your gas line and you can automatically start monitoring gas consumption.



Specification

Flow	3.50... 1400 Nm3/hr
Accuracy	± (1.5 % of measuring value + 0.5 % of full scale)
Nominal pressure	40 bar (580 psi)
Sample rate	0.1 s
Temperature measuring range	-20.. .80 °C (-4...176 °F)
Supply Voltage	230 V 50 Hz
Material	Enclosure Probe Sensor head Gauge Mounting block

EUROPE-WIDE COVERAGE



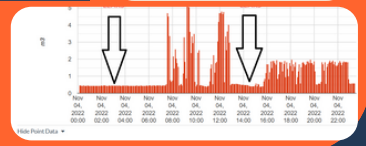
Supporting OEM's to Size N2 Generators Better!

[Extended Report](#)
[Online Monitoring](#)

Partner with us



DETAILED REPORTS →



Empower your distributors to offer n2 systems confidently

[Extended Report](#)
[Online Monitoring](#)

Partner with us



DETAILED REPORTS →

